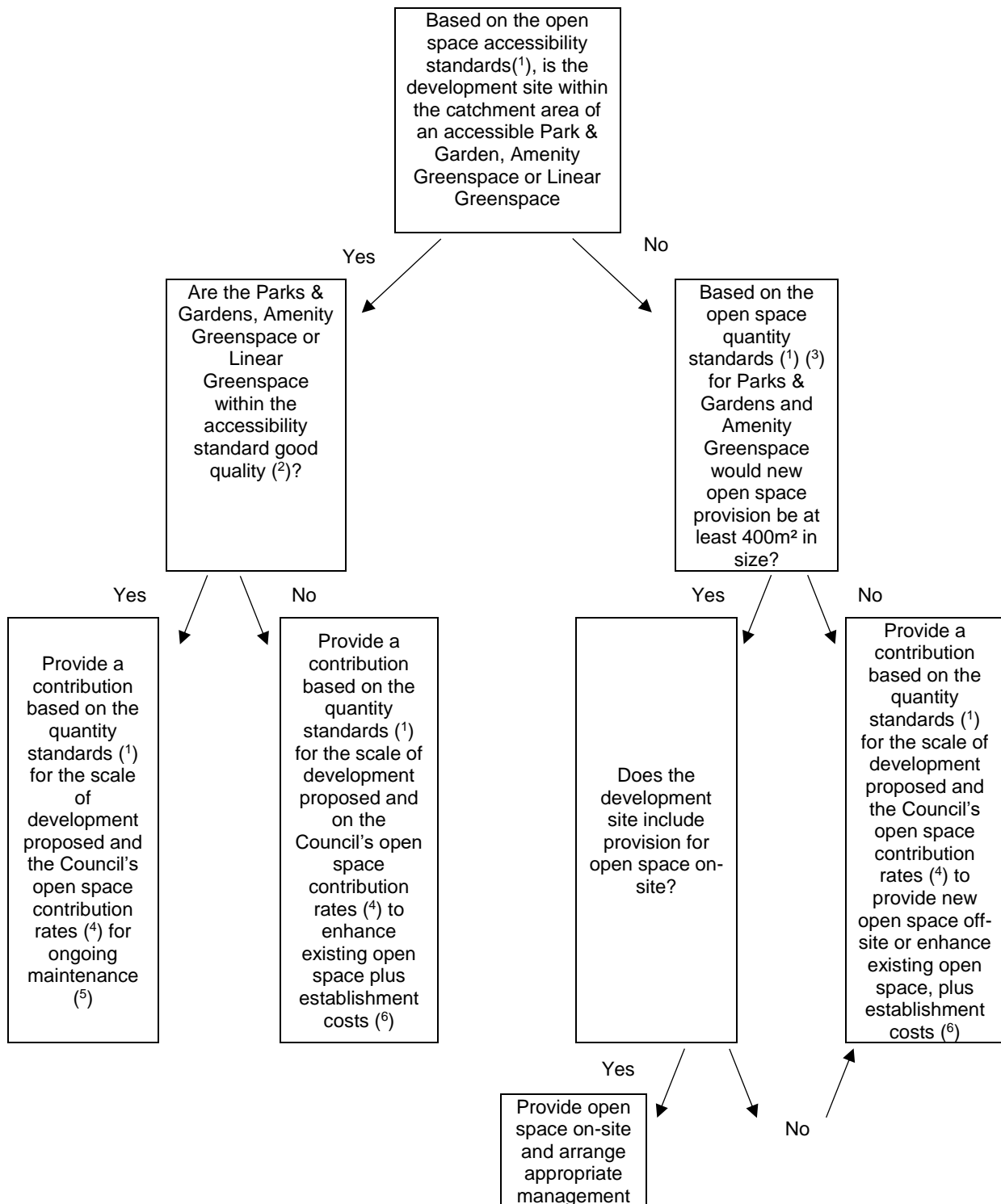


Borough Council of Wellingborough Open Space Developer Contribution Flowcharts – Draft May 2017

Parks & Gardens, Amenity Greenspace and Linear Greenspace

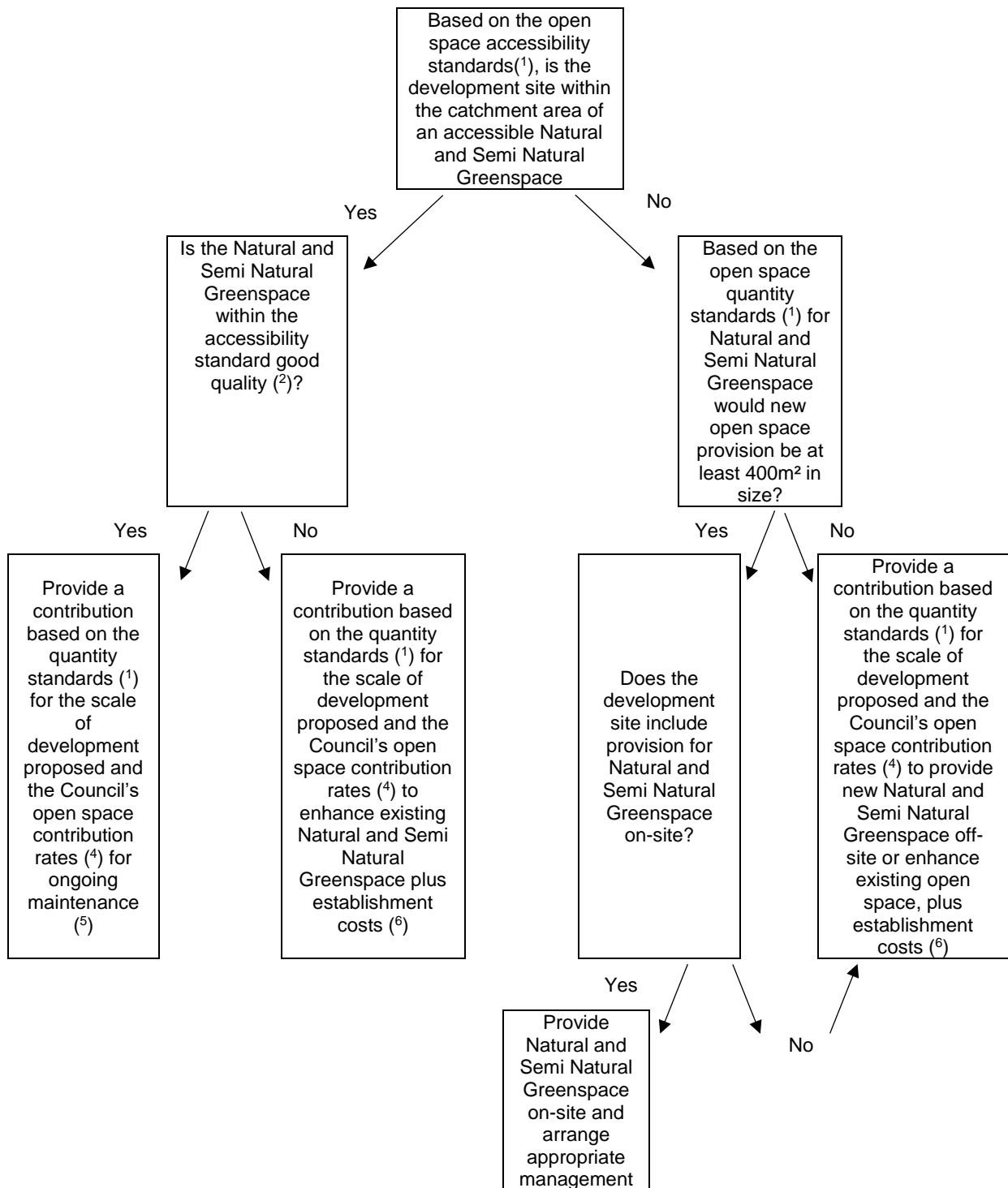


Notes

- 1 Standards can be found in the Open Space Assessment and Strategy (2017) and associated typology maps
- 2 Based on the most recent Open Space Assessment Quality Audits (currently 2015) and shown on the typology maps in the Open Space Assessment and Strategy (2017)
- 3 There is no Quantity standard for Linear Greenspace
- 4 Open space contribution rates (most recent is 2017, inflation to be applied annually)
- 5 Ongoing maintenance is for 15 years
- 6 Establishment costs are for 5 years

Borough Council of Wellingborough Open Space Developer Contribution Flowcharts – Draft May 2017

Natural and Semi-Natural Greenspace

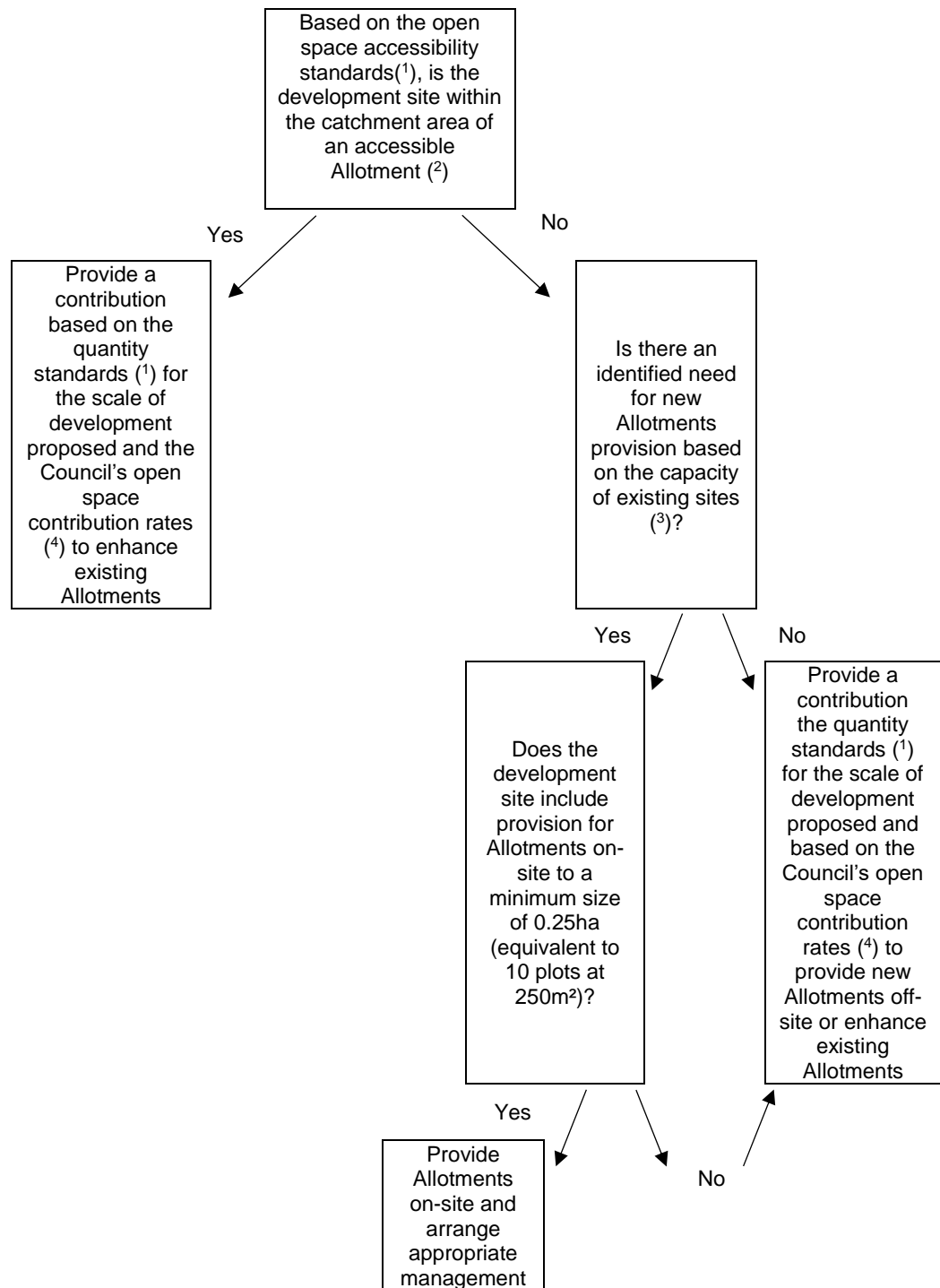


Notes

- 1 Standards can be found in the Open Space Assessment and Strategy (2017) and associated typology maps
- 2 Based on the most recent Open Space Assessment Quality Audits (currently 2015) and shown on the typology maps in the Open Space Assessment and Strategy (2017)
- 3 (Note 3 not used)
- 4 Open space contribution rates (most recent is 2017, inflation to be applied annually)
- 5 Ongoing maintenance is for 15 years
- 6 Establishment costs are for 5 years

Borough Council of Wellingborough Open Space Developer Contribution Flowcharts – Draft May 2017

Allotments

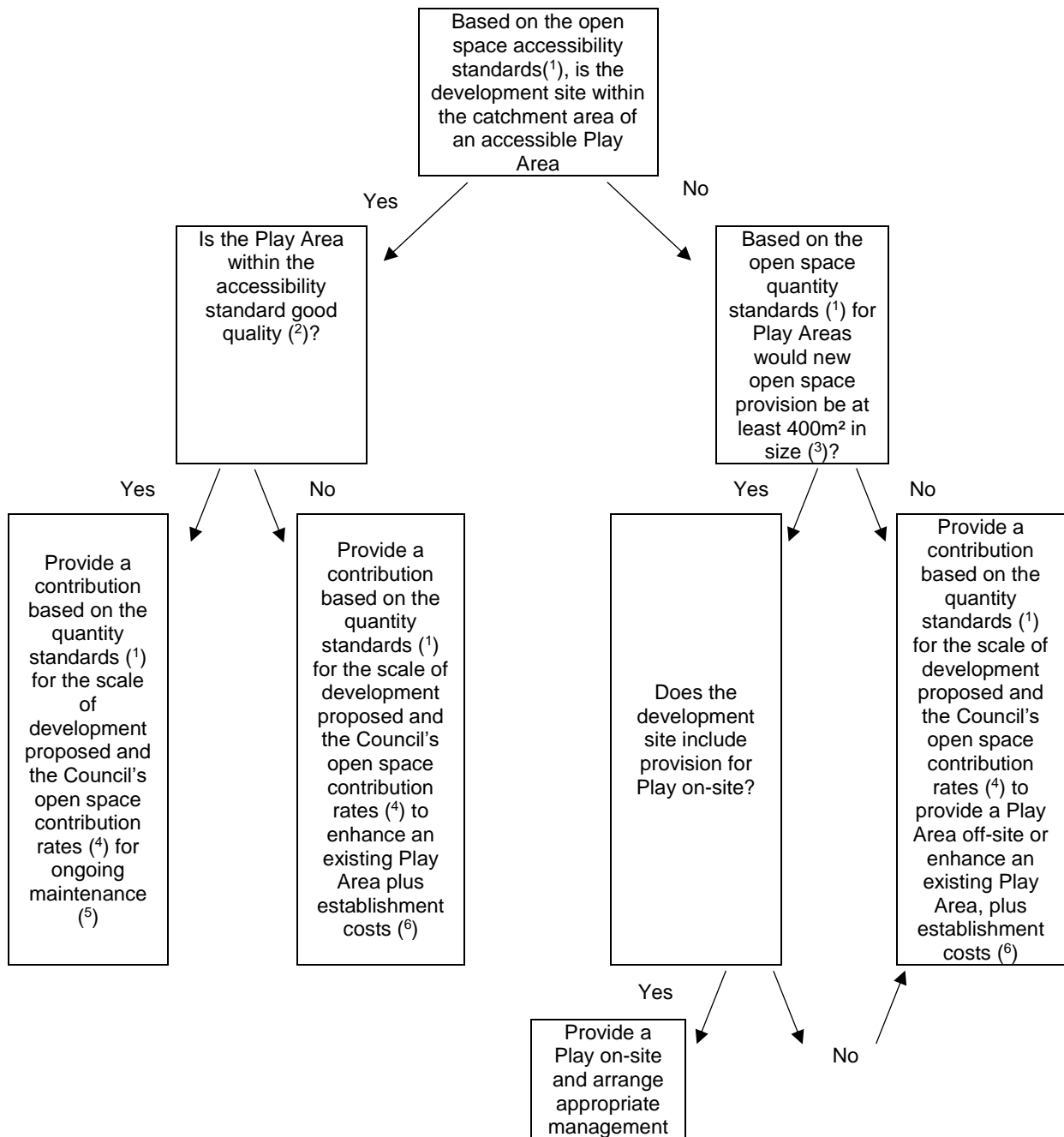


Notes

- 1 Standards can be found in the Open Space Assessment and Strategy (2017) and associated typology maps
- 2 Accessible allotments allow the allocation of plots to the general public (including where restrictions may be in place such as the locality of the plot holders). Allotment sites are classified in the Open Space Assessment and Strategy (2017)
- 3 Allotment capacity was assessed in the Open Space Assessment and Strategy (2017)
- 4 Open space contribution rates (most recent is 2017, inflation to be applied annually)

Borough Council of Wellingborough Open Space Developer Contribution Flowcharts – Draft May 2017

Provision for Children and Young People



Notes

- 1 Standards can be found in the Open Space Assessment and Strategy (2017) and associated typology maps
- 2 Based on the most recent Open Space Assessment Quality Audits (currently 2015) and shown on the typology maps in the Open Space Assessment and Strategy (2017)
- 3 400m² is the recommended minimum size requirement for a LEAP (Fields in Trust, 2015)
- 4 Open space contribution rates (most recent is 2017, inflation to be applied annually)
- 5 Ongoing maintenance is for 15 years
- 6 Establishment costs are for 5 years